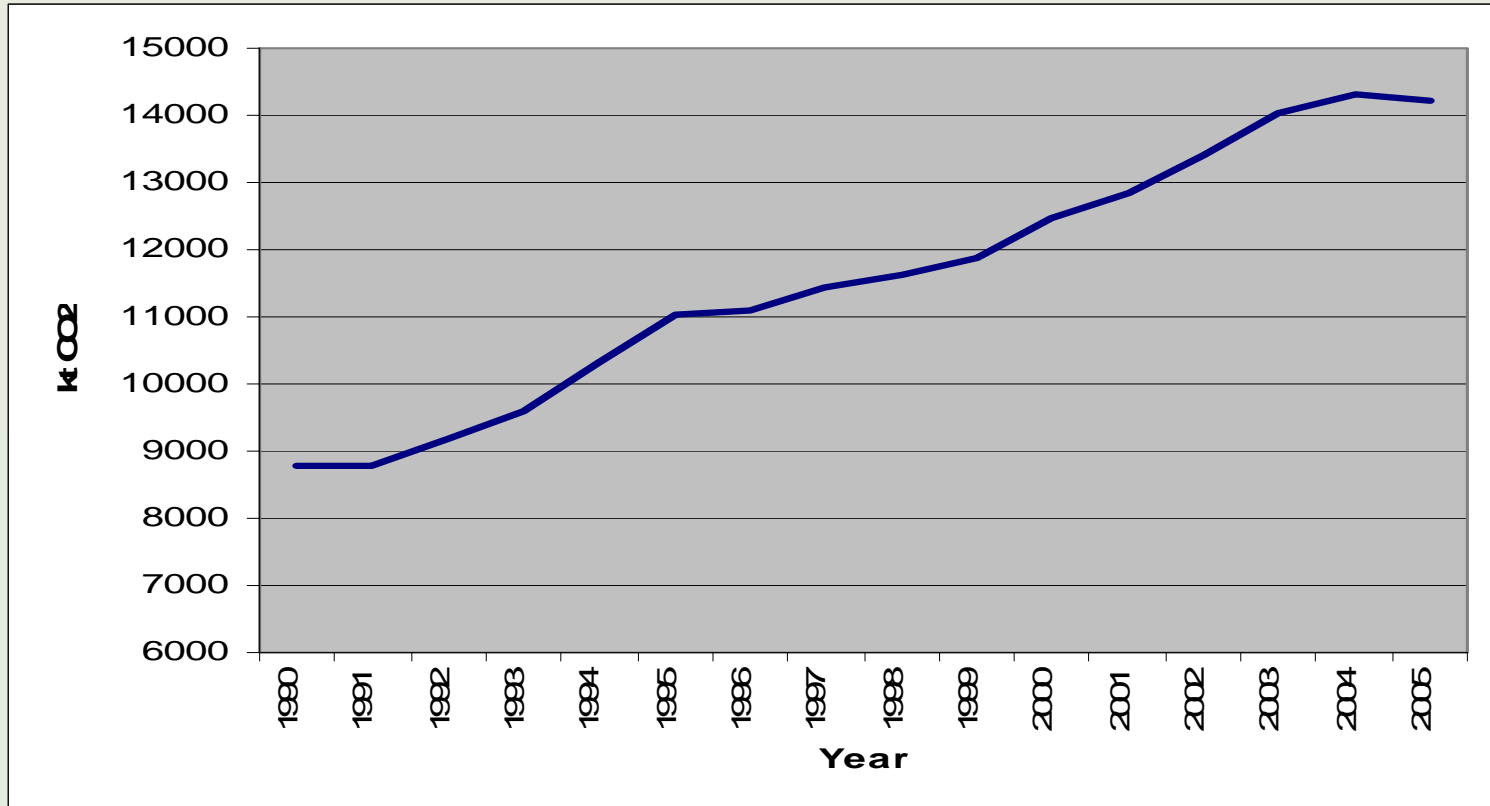


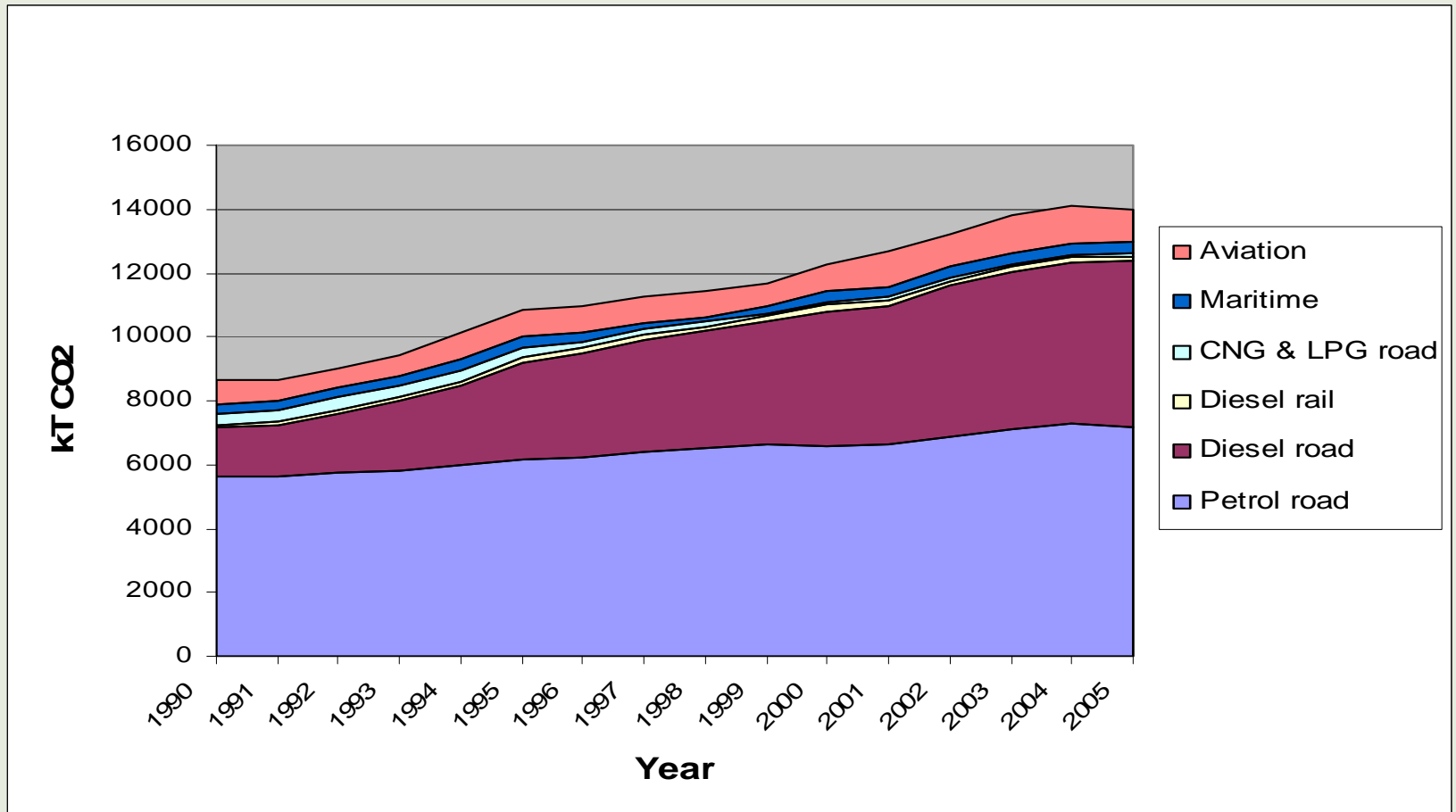
Towards Resilient, Low Carbon Transport

Kathy Perreau, Manager Environmental Sustainability, Ministry of Transport

Domestic Transport Sector Emissions 1990 - 2005



Domestic Transport Sector Emissions 1990 - 2005

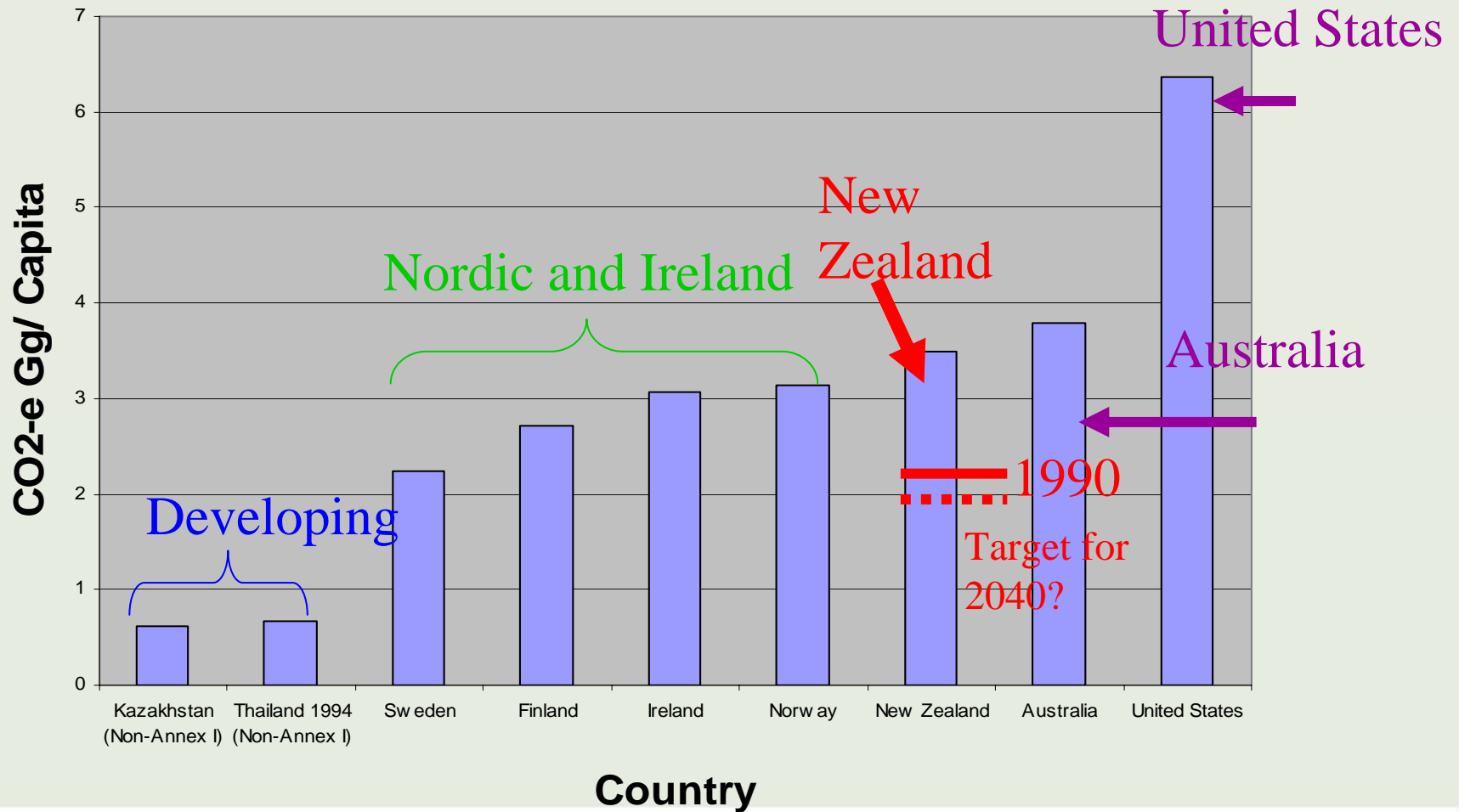


New Zealand Energy Strategy Target #1:

- The government has made an in-principle decision to introduce a **target of halving domestic transport emissions per capita by 2040** relative to 2007 emissions

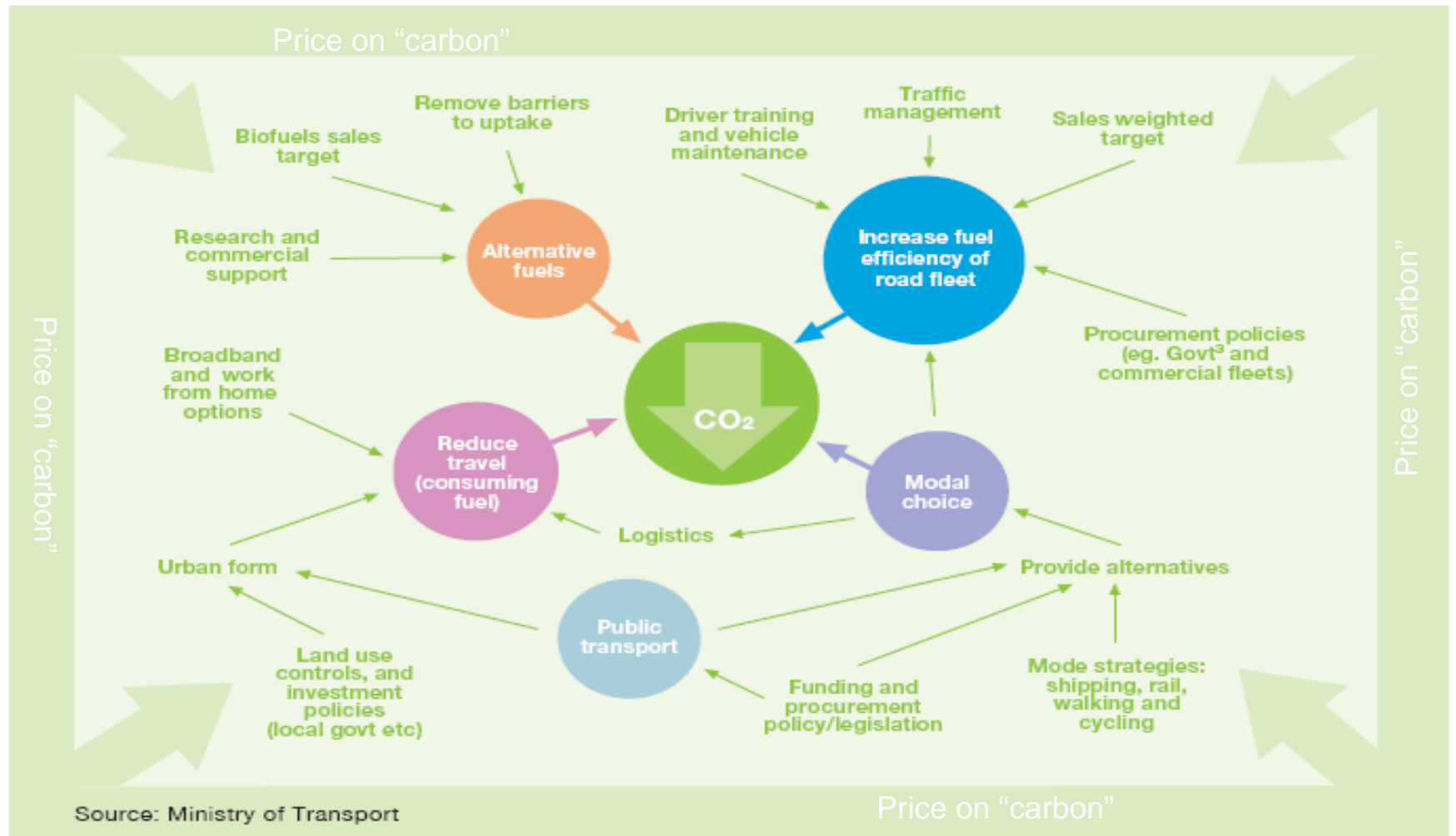
How do we compare to other countries?

Annual domestic transport emissions per capita (2004)



Achieving this will involve policy development across several fronts

Figure 7.3: Measures to reduce land transport greenhouse gas emissions



New Zealand Energy Strategy Target #2:

- Government will work towards positioning New Zealand to be a **world leader in the deployment of new vehicle technologies, including plug-in hybrids and electric vehicles**
- Low Carbon scenario: fleet 60% electric by 2040

Back to the Future?



A display of electric vehicles, Christchurch, shortly after WWI (Alexander Turnbull Library)

THANK YOU

Details:

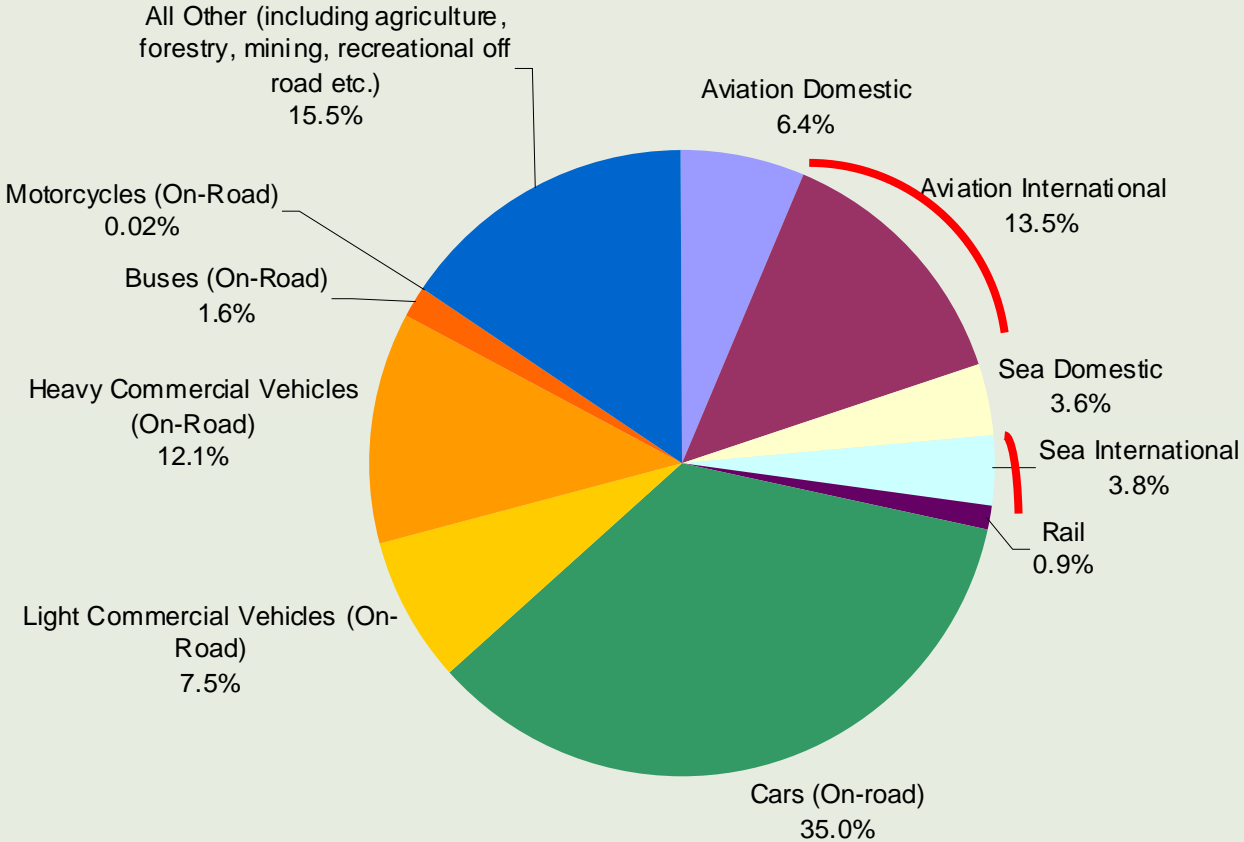
- Kathy Perreau
- Manager
Environmental
Sustainability
- Ministry of Transport,
New Zealand
- [K.perreau@transport.g](mailto:K.perreau@transport.govt.nz)

ovt.nz

- www.transport.govt.nz

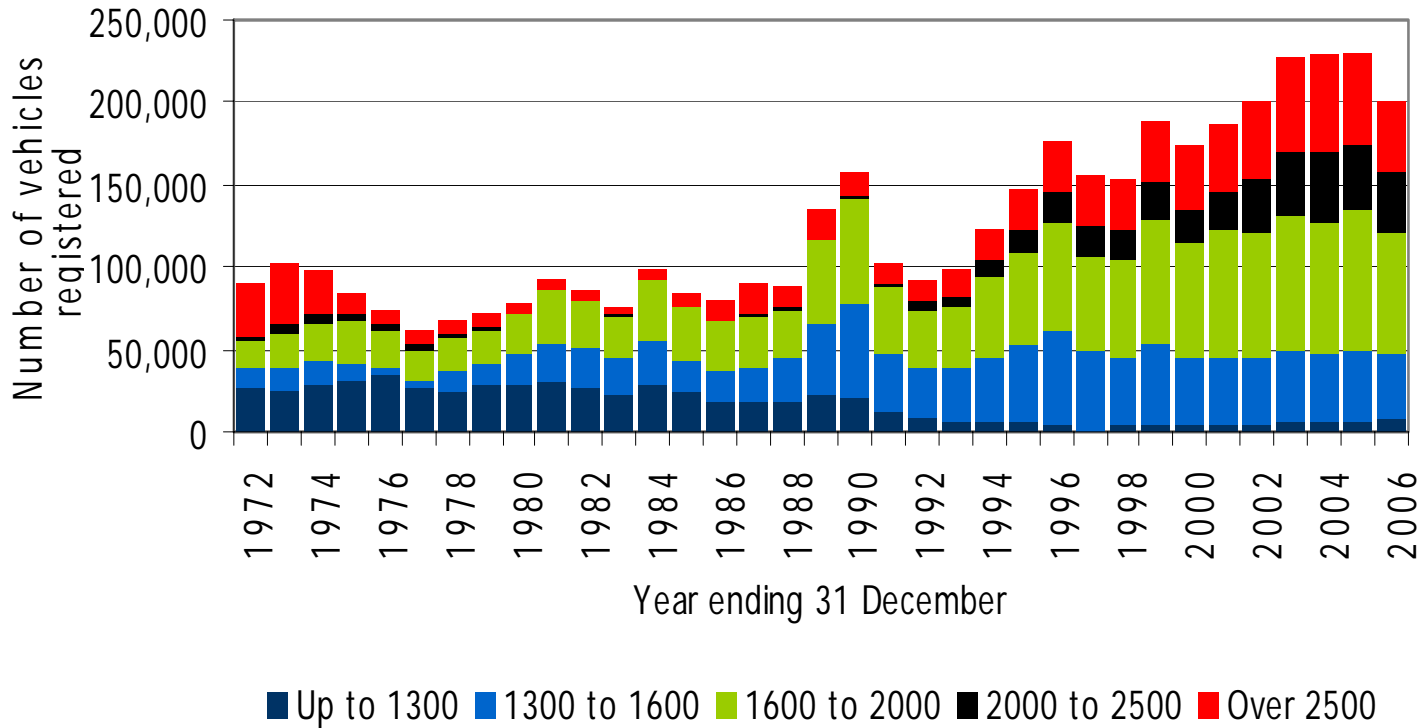


New Zealand's Mobile Energy Use per annum (PJ)



Annual Car Registrations by Engine Size

Numbers of vehicles registered each year, banded by engine size



Source:

Opus

The Basics: Greenhouse Gas Emissions from Transport

Combust Fuel → CO₂ Carbon Dioxide (99.9%)

Plus small levels of CH₄ (methane), N₂O (nitrous oxide) and NO_x

How much?

- 100 litres petrol → 0.237 tonnes CO₂e
- 100 litres diesel → 0.268 tonnes CO₂e
- 100 litres jet fuel → 0.252 tonnes CO₂e

different from the harmful gasses – CO, PM₁₀, HC etc.

How much from transport?

- Annual emissions from all domestic transport uses within New Zealand
= 14,000 k tonnes of CO₂ in 2005
= 3.4 tonnes CO₂ / year per person (man, woman and child in New Zealand)

- Equivalent (per person) to CO₂ emissions a year from



(with average car fuel economy and kms travelled)

- OR annual greenhouse gas emissions from an average dairy cow